

Data Integration and Interface

Jakob Bauer, Kim Fidomski, Adam Malatenski

Software Lab in Research Group
Headed by Dr. Ivan G. Costa

July 18, 2016

Introduction

Main tasks:

1) Data Integration

- Crawler

2) Interface

- Experiment Browser
- RGT-VIZ integration

Data Integration

DeepBlue Epigenomic Data Server



- project by Max Planck Institute for Computer Science
- central access hub for epigenomic data
- API provides data access, operation, and transfer

DeepBlue Epigenomic Data Information

Available metadata:

- Name
- Genome
- Epigenetic Mark
- Sample
- Technique
- Project
- Description
- Additional Metadata - different for each experiment

DeepBlue Epigenomic Data Information

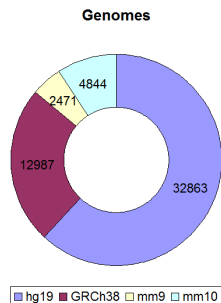
Available metadata:

- Name
- Genome
- Epigenetic Mark
- Sample
- Technique
- Project
- Description
- Additional Metadata - different for each experiment

DeepBlue Epigenomic Data Information

Available metadata:

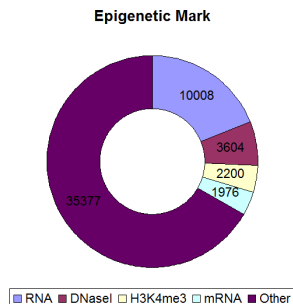
- Name
- Genome
- Epigenetic Mark
- Sample
- Technique
- Project
- Description
- Additional Metadata - different for each experiment



DeepBlue Epigenomic Data Information

Available metadata:

- Name
- Genome
- Epigenetic Mark
- Sample
- Technique
- Project
- Description
- Additional Metadata - different for each experiment



DeepBlue Epigenomic Data Information

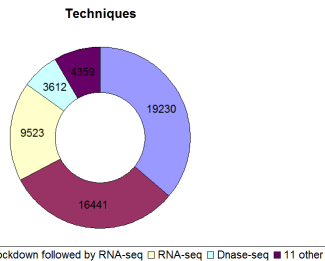
Available metadata:

- Name
- Genome
- Epigenetic Mark
- **Sample**
- Technique
- Project
- Description
- Additional Metadata - different for each experiment

DeepBlue Epigenomic Data Information

Available metadata:

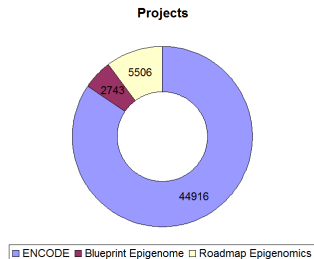
- Name
- Genome
- Epigenetic Mark
- Sample
- Technique
- Project
- Description
- Additional Metadata - different for each experiment



DeepBlue Epigenomic Data Information

Available metadata:

- Name
- Genome
- Epigenetic Mark
- Sample
- Technique
- Project
- Description
- Additional Metadata - different for each experiment



DeepBlue Epigenomic Data Information

Available metadata:

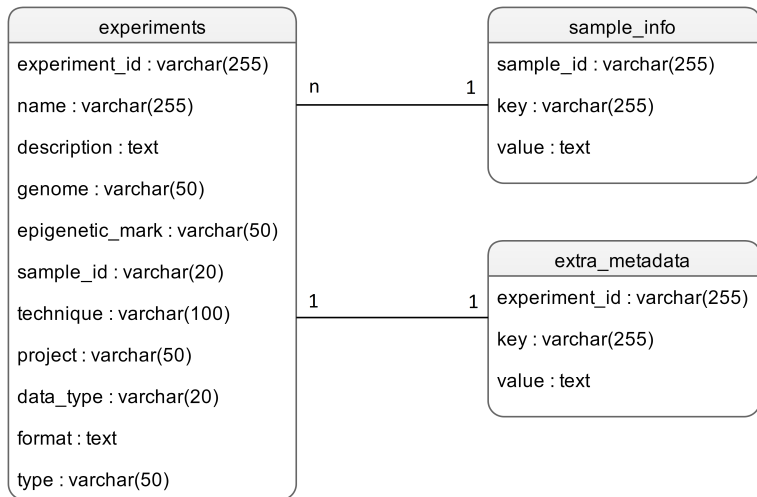
- Name
- Genome
- Epigenetic Mark
- Sample
- Technique
- Project
- **Description**
- Additional Metadata - different for each experiment

DeepBlue Epigenomic Data Information

Available metadata:

- Name
- Genome
- Epigenetic Mark
- Sample
- Technique
- Project
- Description
- Additional Metadata - different for each experiment

Database Structure



Interface

Interface Framework

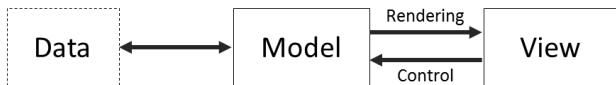


PyQt



Qt Designer

Model View concept



Summary

What we have done:

- Crawler
- Data Structure
- Full-text Indices for Faster Search
- Experiment Browser Interface
- RGT-VIZ Integration
- Documentation
 - Installation Instructions
 - User Interface Manual